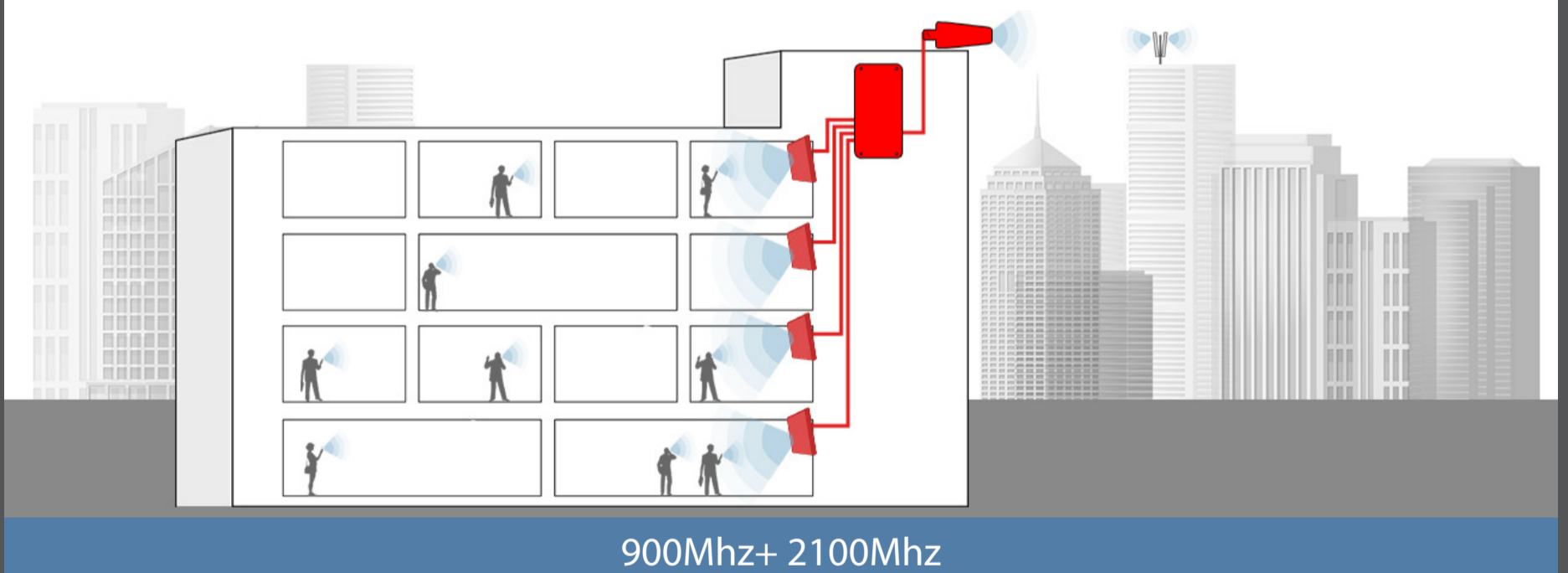


StellaOffice_{-GW}



Do not use Stella Doradus repeaters with non stella doradus equipment.

Stelladoradus repeaters operate silently on the operators network. By using our equipment with competitors equipment you break this control system and could potentially harm the operators network. Doing so will void warranty.

StellaOffice_{-GW}

Description

Used for large buildings where the indoor coverage is weak or non-existent.

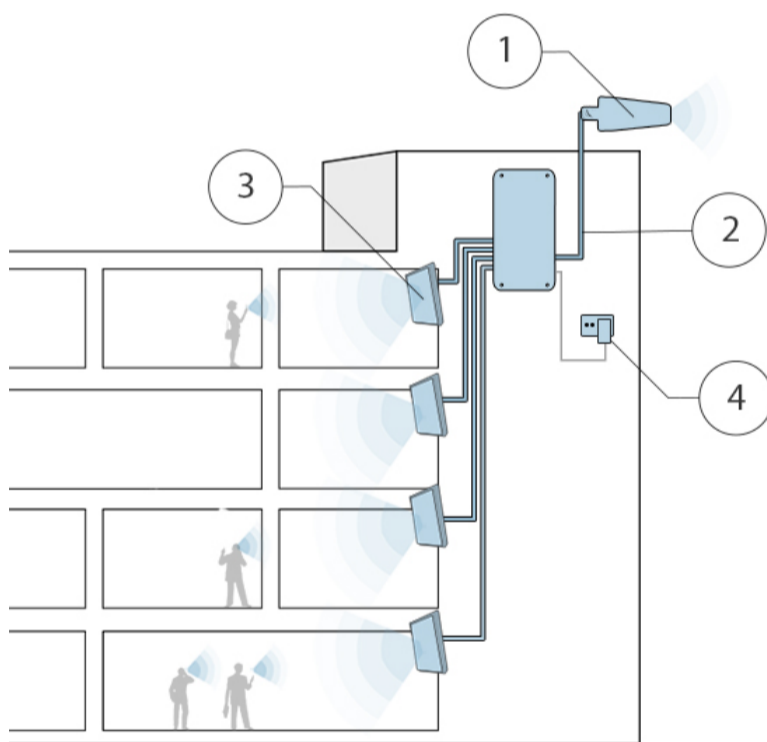
The StellaOffice repeater has 4 ports. Antennas are connected to each of these 4 ports which provide mobile coverage in 4 separate areas inside your building. 1000m2 each. (5-15 rooms)

Features:

- Coverage : 4000m2 (up to 15 rooms).
- All mobile operators are amplified.
- Unlimited number of calls / data sessions at the same time
- No broadband required
- LEDs: Power, feedback and communication
- Longer battery life for all your devices.
- No existing broadband connection required
- Passes all EU regulation E.T.S.I test.

Complete operator protection:

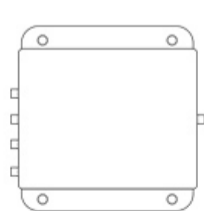
- Feedback detection.
- AGC adjustment.
- Uplink switch off.
- Base station proximity aware



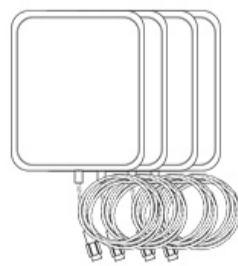
Installation:

- 1) Install the outdoor panel antenna in a location where there is good mobile signal. (usually this is the roof).
- 2) Attach the 15m cable to this antenna and run it down inside the building to the Stellaoffice repeater.
- 3) Attach this cable to the repeater. Then attach 1-4 cables to each of the ports the the repeater. Cable from these ports to 4 locations that require coverage.
- 4) Plug in the power supply.

il kit amplificator:



StellaOffice Repeater



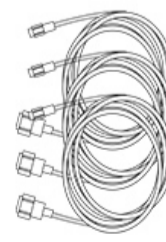
Indoor Antennas X4



Outdoor Antenna



Power Supply



15m SD240 indoor Cables X3



15m SD400 outdoor Cable X 1

StellaOffice_{-GW}

Model number: SD-RP1002-GW-4P
 Frequency: 900Mhz + 2100Mhz



Frequency Specifications:

Frequency bands(Mhz):	(880-960MHz) + (1.92 - 2.17GHz)
Coverage:	(1000m ² per antenna X 4) = ~15 rooms
Number of People:	Unlimited
Gain:	Uplink Gp > 50dB Downlink Gp> 60dB
Pass band ripple:	< 4dB
I/O impedance:	50 ohm/SMA female connector
Max uplink/downlink signal strength:	20dBm / 10dBm
Ambient Temperature:	-30°C to +70°C
Power supply input:	110 - 240V AC
Power supply output:	12v DC
Oscillation Control	Automatic
Level Control:	Automatic*
Uplink Switch Off	Yes**
AGC Range	30db
Surge protection	SMA connectors DC grounded, 12V DC port MOV protected

Antenna Specifications:

Indoor antenna

outdoor antenna

Nominal Gain	6.4dBi / 9.4dBi	10dBi
3dB beam Pattern	60° x 60°	60° x 50°
Bandwidth	790-960MHz + 1710-2700MHz	790-960MHz + 1710-2700MHz
VSWR	<1.4	<1.5
Front to Back Ratio	> 20dB	> 20dB
Polarization	Vertical	Vertical
Power Rating	50W	50W
Impedance	50-OHM	50-OHM
Termination	SMA male	N-Female
Cross Pol. Discrimination	-20dB	-20dB
Dimensions	210 x 180 x 43mm	442 x 205 x 62mm
Weight	0.68kg	1.2kg
Wind velocity	126km/hr	140km/hr
Working temperature	-40°C to +65°C	-40°C to +65°C

Power Supply Specification:

AC	100-240V	50-60Hz
DC input	12V	1.4A
Typical power usage		17W

Mechanical Specification:

Length	32cm
Width	19cm
Depth	3.5cm
Weight	1kg
Mounting	6 x 5mm holes for mounting

* Automatically adjusts during installation. Thereafter, automatically adjusts for seasonal variation in pathloss between Basestation and Outdoor Antenna.

** The uplink amplifiers switch off when the repeater is not in use, thus reducing the uplink noise to almost zero. When the repeater is in use (eg phone call being made), the uplink amplifier switches on for the duration of the call and a blue LED switches on indicating this is the case.

Note: Specifications subject to change without notice.